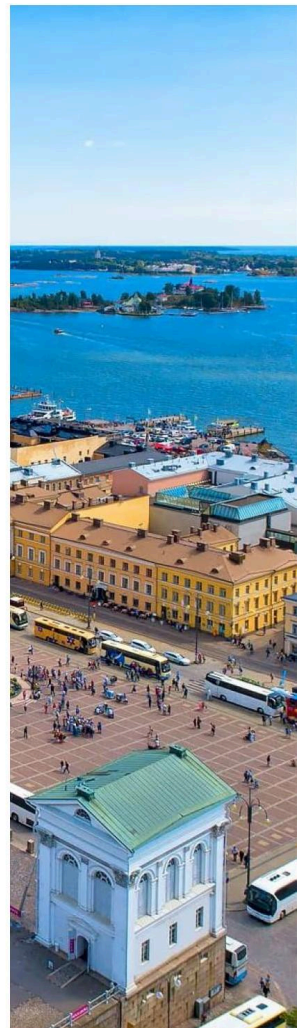


# RI URBANS

## 3<sup>rd</sup> SCIENCE MEETING

25-26 September, 2024  
Helsinki (Finland), hybrid format



## SCOPE

**RI-URBANS** is a European Commission (EC) Horizon-2020 funded project (<https://riurbans.eu>; grant agreement 101036245) to demonstrate how Service Tools (STs) from atmospheric Research Infrastructures (RIs) can be adapted and enhanced to provide advanced air quality (AQ) measurements in European cities and industrial, harbour, airport and road traffic hotspots, as well as areas with significant levels of air pollution and associated health effects. RI-URBANS combines advanced scientific knowledge and innovative technical work to develop pilot STs that will enhance the capacity of the Air Quality Monitoring Networks (AQMNs) to provide the necessary observations to evaluate, predict and abate urban air pollution. The project is directly connected with ACTRIS (Aerosol, Clouds and Trace Gases Research Infrastructure; <http://www.actris.net>) and ICOS (Integrated Carbon Observation System; <https://www.icos-cp.eu>) in terms of use of STs, networking supersites and data management. RI-URBANS focuses on human exposure to outdoor ambient ultrafine particles (UFP, particle number concentrations, PNC and particle size distribution, PSD), atmospheric particulate matter (PM, in mass concentration) in terms of their sizes and constituents, as well as their gaseous precursors (including volatile organic compounds, VOCs and ammonia, NH<sub>3</sub>).

The **scope of the RI-URBANS 3rd Science Meeting** is in the following major topics of the project:

- Summary of research outputs from WPs since the 2nd Science Meeting
- Developed RI-URBANS Service Tools and their applications
- Guidance documents (Art 10, Annex 7 of new EU AQ Directive) for implementing advanced AQ parameters (UFP, PSD, BC, NH<sub>3</sub>, VOCs, PM speciation, source apportionment, evaluation of health effects)
- Added value of measuring the listed above AQ parameters at Pan-European scale in urban areas
- Open access to RI-URBANS compiled data

At the same time, a major goal of the 3rd Science Meeting is to **involve AQ policy stakeholders in the interpretations and discussions** of the project results, as well as demonstrations and applications of the STs.

Concerning AQ policy stakeholders, RI-URBANS intends to invite experts from DG-ENV, DG-SANTE, EEA, EMEP, WMO, and WHO as well as representatives of the cities, regions and countries involved in the pilot studies and others with potential interest in the STs.

# PROGRAMME

**DAY 1: 25<sup>th</sup> September 2024: 09-19 h (Finnish time) or 08-18 h (CEST)**

To join the meeting, click the MS Teams link below:

[Join the meeting now](#)

Meeting ID: 376 823 951 160

Passcode: aLU8W3

**For non-registered participants, please, contact:**  
[nahid.atashi@helsinki.fi](mailto:nahid.atashi@helsinki.fi) or [alexander.mahura@helsinki.fi](mailto:alexander.mahura@helsinki.fi)

**Meeting MS Teams-link from 09:15 h of Helsinki time. All timing below refers to Finnish time**

**09:00-09:30 Registration** of delegates (for onsite participants), welcome and technical information - Nahid Atashi (UHEL), Marta Monge (CSIC)

**09:15** Opening MS Teams-link for online participants (tech. support for Brainstorming room at FMI) - Alexander Mahura (UHEL)

## INTRODUCTORY PLENARY SESSION

**09:30-09:45 Welcome, logistics and safety issues**

Nahid Atashi, Marta Monge and Hilikka Timonen

**09:45-10:00 RI-URBANS progress report and outputs since 2nd Science Meeting**

Tuukka Petäjä (UHEL) / Xavier Querol (CSIC)

**10:00-10:15 Effect of new AQD to AQ monitoring and air protection work at Helsinki Metropolitan area**

Hanna Manninen (Helsinki Region Environmental Services Authority, HSY)

**10:15-10:45 Coffee/ Tea break + Poster session** : Moderator - Zoe Le Bars (SFLMST)

**10:45-11:00 Health effects of UFP in Germany**

Annette Peters (Helmholtz, Munich, Germany) (*Online*)

**11:00-11:15 Overview of WHO's SPS**

Kerolyn Katrina Shairsingh (World Health Organization, WHO) (*Online/ Video-recording*)

**11:15-11:30 Talk about AQ Directive**

Silvia Monge (European Environmental Agency, EEA) (*Online*)

## PROGRESS OF RI-URBANS' WPs

**11:30-11:50 WP1 progress/ status update since the 2nd Science Meeting**

(Andre Prevot (*Online*) / Andrés Alastuey)

**11:50-12:10 WP1 discussion and next steps** (Andre Prevot / Andrés Alastuey)

**12:10-13:10 Lunch** (in FMI canteen)

## PROGRESS OF RI-URBANS' WPs

**13:10-13:30 WP2 progress/ status update since the 2nd Science Meeting**

(Roy Harrison / Gerard Hoek (*Online*))

**13:30-13:50 WP2 discussion and next steps** (Roy Harrison / Gerard Hoek (*Online*))



**13:50-14:10 WP3 progress/ status update since the 2nd Science Meeting**

(Augustin Colette / Maria Kanakidou *(Online)*)

**14:10-14:30 WP3 discussion and next steps** (Augustin Colette / Maria Kanakidou)

**14:30-14:50 WP4 progress/ status update since the 2nd Science Meeting**

(Teresa Moreno *(Online)*) / Tuukka Petäjä)

**14:50-15:10 WP4 discussion and next steps** (Teresa Moreno / Tuukka Petäjä)

**15:10-15:40 Coffee/ Tea break + Poster session** : Moderator - Marjan Savadkoohi (CSIC) (*continuation*) & *group photo*

#### **PROGRESS OF RI-URBANS' WPs**

**15:40-16:00 WP5 progress/ status update since the 2nd Science Meeting**(Tuukka Petäjä, Xavier Querol)

**16:00-17:00 Progress and next steps for data management** (Wenche Aas)

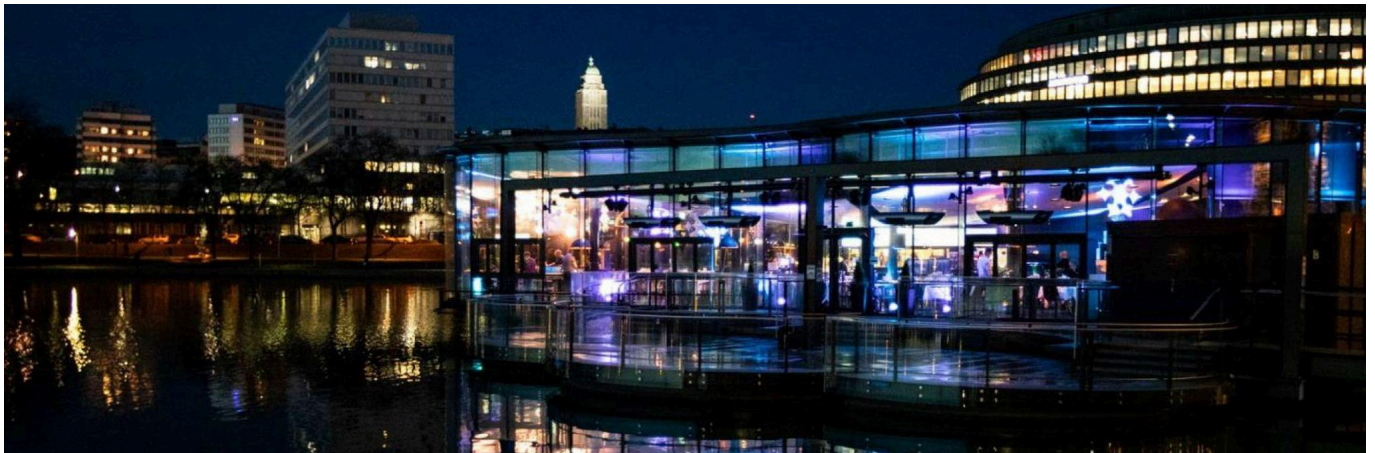
**17:00-17:30 WP5 discussion and next steps** (Tuukka Petäjä, Xavier Querol)

**17:30-17:50 Coffee/ Tea break + Poster session** : Moderator - Meritxell García Marlès (CSIC)  
(*continuation until 19:00 pm*)

**17:50-19:00 General Assembly** (Leaders of Beneficiaries) & **Steering Committee** (for PCT, WP Leaders + Data, Innovation & Risk Managers)

**20:00 Dinner Meripaviljonki - Floating Panorama Restaurant** (<https://www.ravintolameripaviljonki.fi/en>)

*Each delegate will receive a bill for the dinner after the meeting.*



*Meripaviljonki is a truly unique restaurant located in Hakaniemi, Helsinki. Floating on the waves of Säästöpankinranta, the restaurant offers panoramic sea views and the best seasonal delicacies.*

*Meripaviljonki is both a stylish lunch restaurant and dinner destination.*

**DAY 2: 26<sup>th</sup> September 2024: 9:30-17:30 h (Finnish time) or 8:30-16:30 h (CEST)**

To join the meeting, click the MS Teams link below:

[Join the meeting now](#)

Meeting ID: 376 823 951 160

Passcode: aLU8W3

**For non registered participants, please, contact:**  
[nahid.atashi@helsinki.fi](mailto:nahid.atashi@helsinki.fi) or [alexander.mahura@helsinki.fi](mailto:alexander.mahura@helsinki.fi)

**Meeting MS Teams-link from 09:15 h of Helsinki time. All timing below refers to Finnish time**

#### **PROGRESS OF RI-URBANS' Service Tools (STs)**

**RI-URBANS STs - finished and will not be discussed here:**

**ST for UFP-PNSD** (Merixell García, Xavier Querol, Andrés Alastuey)

**ST for BC** (Marjan Savadkoohi, Marco Pandolfi, Tuukka Petäjä)

**ST for Oxidative Potential** (Gaëlle Uzu)

**ST for Health Effects** (Vanessa Nogueira, Xavier Basagaña)

**ST for Emission Inventories** (Jeroen Kuenen, Marc Guevara)

**09:30-09:40 ST for PM Speciation** (Andrés Alastuey & Benjamin Chazeau) (*Online*)

**09:40-09:50 ST for SA Offline, Online, Multi-Time PM** (Fulvio Amato (*Online*) & Olivier Favez)

**09:50-10:00 ST for SA BC, UFP, and VOCs** (Marjan Savadkoohi, Merixell Garcia, Therese Salameh, Xavier Querol)

**10:00-10:10 ST for VOCs** (Therese Salameh) (*Online*)

**10:10-10:20 ST for NH3** (Xavier Querol)

**10:20-10:50 Coffee/ Tea break + Poster session : Moderator - Anna Canals (CSIC) (continuation)**

#### **PROGRESS OF RI-URBANS' Service Tools (STs)**

**10:50-11:00 ST for Vertical Profiles PBL** (Simone Kotthaus)(*Online*)

**11:00-11:10 ST for Vertical Profiles Aerosols** (Lucia Mona)

**11:10-11:20 ST for Vertical Profiles IAGOS** (Andreas Petzold)

**11:20-11:30 ST for Urban Mapping and Citizen Science** (Martine van Poppel)

**11:30-11:40 ST for Urban Mapping and Deterministic Modelling** (Karine Sartelet)

**11:40-11:50 ST for Multiscale UFP Modelling** (Spyros Pandis (*Online*), Karine Sartelet, Maria Kanakidou)

**11:50-12:50 Lunch (in FMI canteen)**

#### **DISCUSSION ON SERVICE TOOLS (STs) AND RP2**

**12:50-14:50 Wrap up & Discussions on STs and RP2** (Video, discussion of results and next steps for each WP)

**14:50-15:10 Coffee/ Tea break**

**15:10-16:30 Continue discussions on STs and RP2 & wrap-up of the Science Meeting**

**16:30-17:10 Visit to SMEAR-III urban station at Kumpula Campus**  
(Leena Järvi, Katrianne Lehtipalo, Tuukka Petäjä)

**17:10 End of the 3rd Science Meeting**

## VENUE

The RI-URBANS 3rd Science Meeting will be carried out on **25-26 September 2024** in a hybrid mode (both onsite and online) in **Helsinki, Finland**.

The venue will be at the **Finnish Meteorological Institute**, Kumpula Campus of the University of Helsinki



**University of Helsinki Kumpula campus**



**Finnish Meteorological Institute (FMI)**

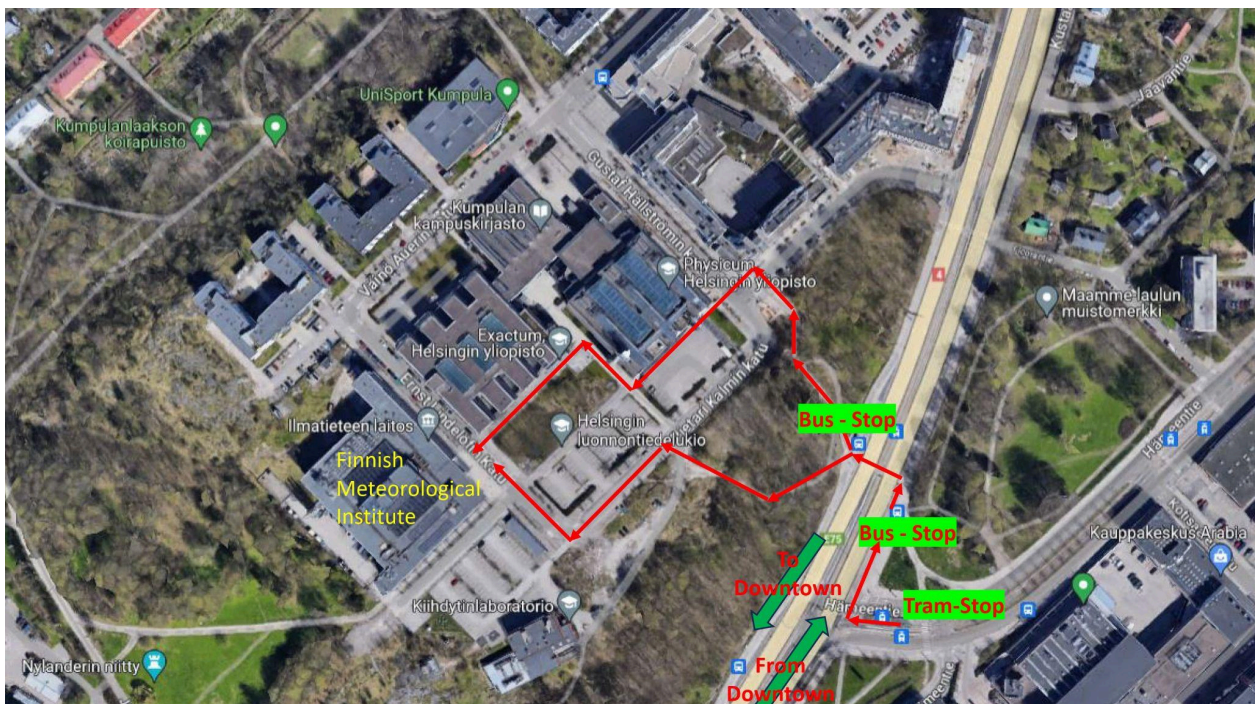


## How to arrive at the venue?

**Address:** Finnish Meteorological Institute (FMI)  
Kumpula campus, Dynamicum building  
Erik Palménin aukio 1  
FI-00560, Helsinki

## Public Transport to/in Helsinki, Finland

- For actual information on public transport (including train, bus, tram, metro, etc.) in Helsinki, Finland, you can use the Journey/ Travel Planner (<https://www.hsl.fi/en>) & type route, for example, from “Use current location” (as “Helsinki Central Railway Station”) to “Enter destination” (as “Kumpula Campus Helsinki”)
- **By Tram or Bus**  
The Kumpula campus of the University of Helsinki (where the FMI is situated) is easily accessible with public transport.  
Take train #6 from the Helsinki Central Railway Station (central entrance) until tram-stop “Kumpula Campus Helsinki” & walk towards the campus  
Take buses #71, #75, #77, #78, #717, #718, or #739 from the Helsinki Central Railway Station (side entrance with multiple city public bus stops) until bus-stop “Kumpula Campus Helsinki” & walk towards the campus



## Arrival/ Departure at/from Helsinki by aeroplane

Helsinki Airport is located about 20 kilometres from Helsinki City Centre. The travel time by car/taxi or by train (having letters “I” and “P”) from the airport to the Helsinki City Center takes around 30 minutes, and a bus (#600) ride takes 40-50 minutes.

**By Train:** Helsinki Airport's train station is located under the terminal. There is a direct elevator and escalator connection from the departures and arrivals hall to the train station. Local "I" and "P" trains operate to and from Helsinki Airport. Local train tickets can be purchased from HSL's mobile app, or from the ticket machine at the train platform. Timetables, tickets and fares for local trains can be found on HSL website (<https://www.hsl.fi/en/tickets-and-fares>).

**By Bus:** Helsinki Airport's bus station is located outside the Arrivals hall. Bus route #600 operates between Helsinki Airport and Helsinki City Centre. Tickets can be purchased online on HSL's mobile app, or at the bus station's ticket machine.

See also Helsinki Airport Connection at <https://www.finavia.fi/en/airports/helsinki-airport/access>

## Recommended Hotels

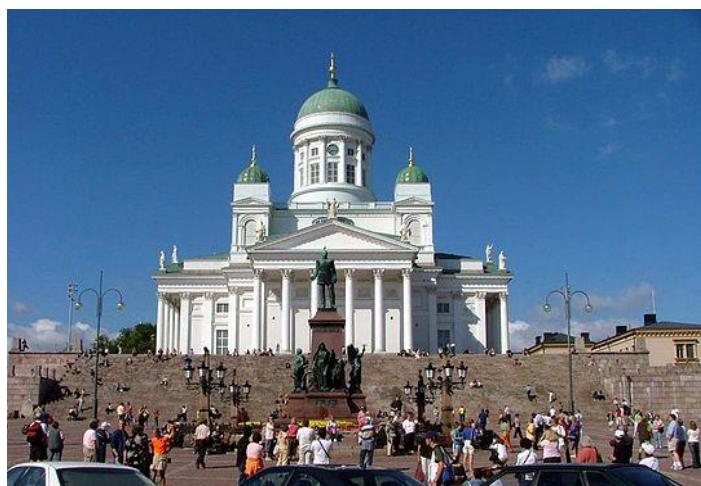
Helsinki has a lot of hotels that can be easily booked via [www.booking.com](http://www.booking.com).

Here is a list of hotels near the city center, located within walking distance to the restaurant (*Meripaviljonki*) and offering good bus and tram connections to the venue: [Hotel List](#).

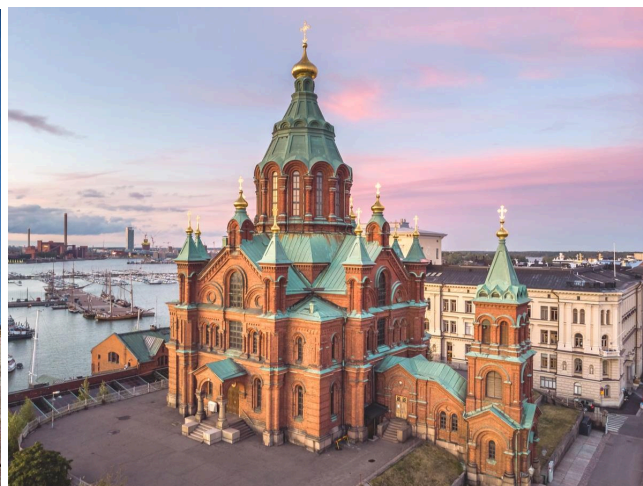
## Helsinki City Information

Information on Helsinki (e.g., accommodations, shopping, eating & drinking, history of Helsinki) can be found on the city website: <https://www.helsinki.com/v/city-info>

- Tourist information (practical information for visitors about Helsinki): <https://www.myhelsinki.fi/en/info/tourist-information>
- Maps of Helsinki city: <https://welcome.hel.fi/getting-around-helsinki/maps>



*Helsinki Cathedral*



*Uspenski Cathedral*





*Central Railway Station of Helsinki*

### Hotels in Helsinki

Helsinki has a lot of hotels that can be easily booked via [www.booking.com](http://www.booking.com)

### General Information

#### Time difference

Finland uses Eastern European Time (EET) during the winter as standard time and Eastern European Summer Time (EEST) during the summer as daylight saving time. EET is two hours ahead of coordinated universal time (UTC+02:00) and EEST is three hours ahead of coordinated universal time (UTC+03:00).

#### Currency & Banking

The currency in Finland is the Euro (€). Credit cards are accepted in most of the restaurants and shops.

#### Electricity

Standard power supply in Finland is 220V/50Hz (two-pin power outlet).



*The National Museum of Finland (<https://www.kansallismuseo.fi/en/kansallismuseo>)*